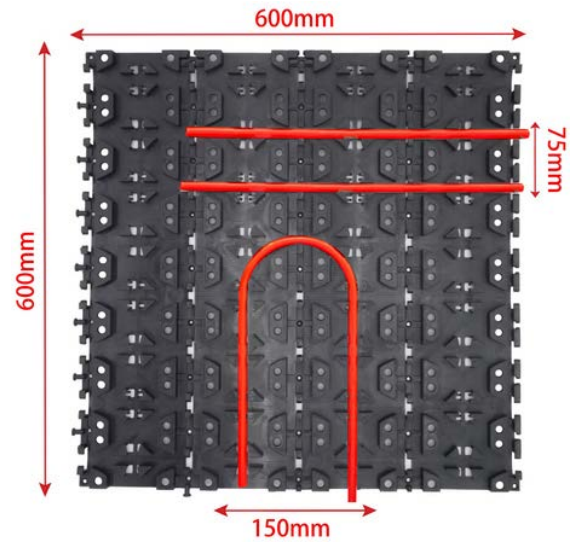
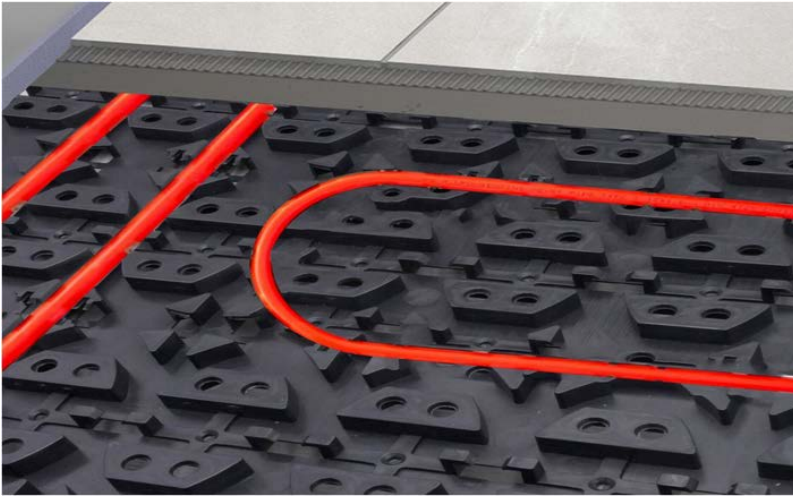


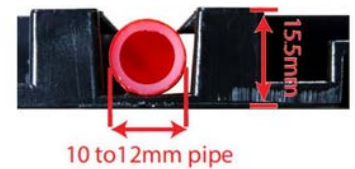
FAST FIX

RADICAL

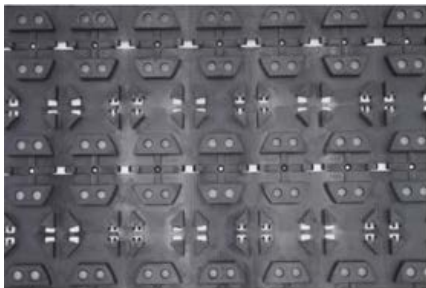
UNDERFLOOR HEATING



The Panel is a revolutionary pipe retention system, which provides a very quick to install and simple to use solution for a wide range of floor heating, wall heating or ceiling cooling applications.



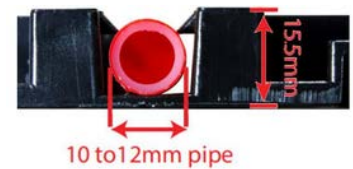
FEATURES AND BENEFITS



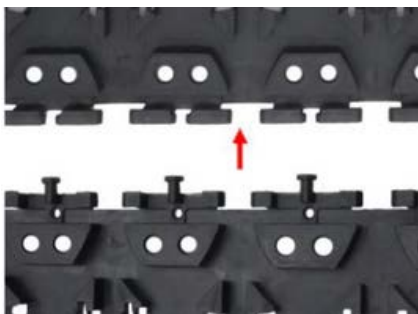
Multiple Break Points with V shaped notches to aid cutting knife alignment.



Multiple Pipe Retention Clips to secure the pipe in place.



LOWtek for 10 to 12mm pipe.



Slide and lock feature to connect the panels together.



Optional high compressive strength insulation layer.

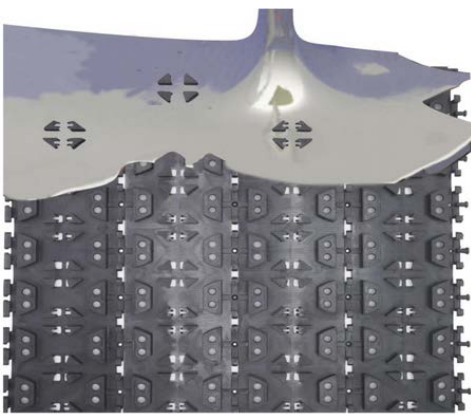


Mechanical fixing point within every 'eye'.

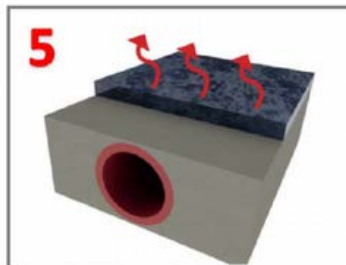
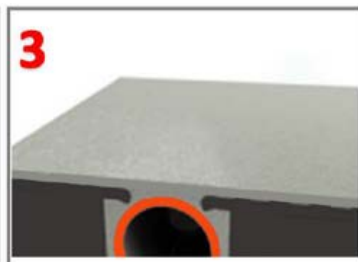
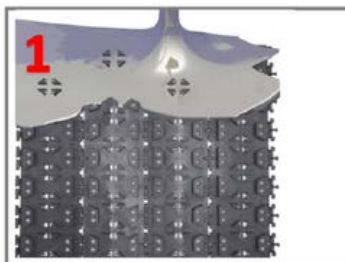
LEVELLING COMPOUND

Levelling compound is a pumpable, high flow, economic levelling compound for interior use in areas with normal levels of wear. It is supplied as a pre-blended dry powder designed for use as a thin levelling screed when mixed with water. It can be covered with floor finishes ranging from tiles, vinyl, linoleum, carpet and engineered wood flooring after just 24 hours in good drying conditions.

Levelling compound is ideal for use where a rapid drying system is required.



1. Fast self-smoothing screed
2. Rapid drying 1 to 2 hours
3. Light foot traffic in 4 hours
4. Apply floor coverings in just 24 hours
5. high heat output and fast response times.



HEAT OUTPUTS

FLOOR COVERING	30°C		35°C	
	Heat Output W/m ²	Floor surface temp °C	Heat Output W/m ²	Floor surface temp °C
Tile	56.5	25.22	84.91	27.85
Vinyl or 6mm laminate	40.1	23.61	60.33	25.6
Carpet or underlay 1.5 tog	30	22.79	45	24.18

40°C		45°C		50°C	
Heat Output W/m ²	Floor surface temp °C	Heat Output W/m ²	Floor surface temp °C	Heat Output W/m ²	Floor surface temp °C
84.91	27.85	113.21	30.5	169.85	36.7
60.33	25.6	80.44	27.47	120.74	30.5
45	24.18	60	25.55	90	28.53

*for guidance purposes only (all systems must conform to BS EN1264).